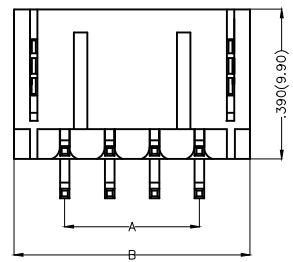
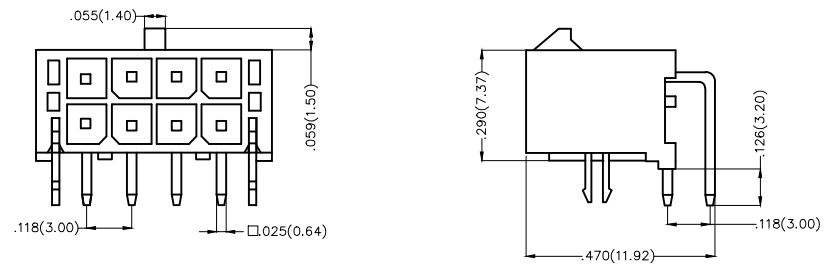


REV	LOCATIONS	DESCRIPTION	DATE	REVISER	APPD

Electrical
 Current Rating: 5.0A AC(rms)/DC
 Voltage Rating: 250V AC(rms)/DC
 Contact Resistance: 10 mΩ Max
 Insulation Resistance: 1000 MΩ MIN
 Withstanding Voltage: 1500V AC r.m.s
 Temperature Range-Operating: -25°C~+85°C

Material and Plating
 Housing: PA66(UL 94V-0)
 Contact Pin: Brass
 Plating: Tin Plated

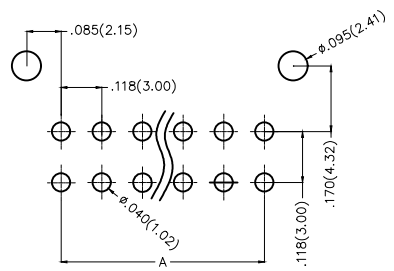


Circuits (n)	Part No.	Dimensions(in/mm)	
		A	B
12	FWF30003-D12B22K6B	.591(15.00)	.854(21.70)
14	FWF30003-D14B22K6B	.709(18.00)	.969(24.60)
24	FWF30003-D24B22K6B	1.299(33.00)	1.563(39.70)

Ordering Information

FWF 300 03 — D XX B 2 2 K6 B
 1 2 3 4 5 6 7 8 9 10

1 <u>Category</u> FWF-Wafer	2 <u>Series Number</u> 300-Pitch3.0mm	3 <u>Distinction No.</u> 03	4 <u>Row Option</u> D-Double Row	5 <u>Circuits</u> xx	6 <u>Entry Angle</u> B-90° Angle
7 <u>Plating</u> 2-Tin Plated	8 <u>Material-Resin</u> 2-PA66	9 <u>Color-Resin</u> K6-Black	10 <u>Packaging</u> B-PE Bag		



Recommended P.C.Board Layout

<p>THIRD ANGLE PROJECTION</p>	GENERAL TOLERANCES (UNLESS SPECIFIED) X.±.012(0.30) X'±5" X.X±.008(0.20) .X'±2" X.XX±.006(0.15) .XX'±1" X.XXX±.004(0.10) .XXX'±0.5"		APPROVE BY FRANK CHECKED BY CHERRY DRAWN BY JACOB	DATE 01/JUL/13 DATE 01/JUL/13 DATE 01/JUL/13	PART NO. FWF30003-DXXB22K6B TITLE Wire to Board (Wafer) Pitch 3.0mm 90° Angl (DIP)	ITEM NO. FWF30003 THIS DRAWING CONTAINS INFORMATION THAT IS PROPRIETARY TO TXGA INDUSTRIAL ELECTRONICS(S.Z)CO.,LTD AND SHOULD NOT BE USED WITHOUT WRITTEN PERMISSION	<p>Leader Of Industry</p>
	SCALE 5:1 SIZE A4	REV 0 SHEET NO. 1/1					